

TROUBLE IN TAHITI + A QUIET PLACE

VISUAL STORY

Information about the show

Introduction to the characters

The stories of Trouble In Tahiti and A Quiet Place

This Visual Story uses accessible language and is intended to be used by all.



ARTS COUNCIL
ENGLAND

Supported using public funding by
**ARTS COUNCIL
ENGLAND**

ROYAL BALLET AND OPERA

TROUBLE IN TAHITI + A QUIET PLACE

The stories of *Trouble in Tahiti* and *A Quiet Place* are told through singing, music and acting. Sometimes the characters in the stories get hurt or upset, but they are just acting as part of the performance. The performers will be on the stage for the whole performance, they will not come into the audience.

RUNNING TIMES: The performance lasts approximately 2 hours and 50 minutes, including one interval

TROUBLE IN TAHITI - 45 minutes

INTERVAL - 25 minutes

A QUIET PLACE - 1 hour and 40 minutes

GUIDANCE: Suitable for 16+

Trouble in Tahiti:

This opera contains scenes in which characters express stereotypical attitudes to race.

A Quiet Place:

This opera contains descriptions of suggested childhood sexual abuse, themes of suicide and mental illness, and scenes in which characters express homophobia.



ROYAL BALLET AND OPERA

THE STAGE



Halfway through the performance all of the lights will come back on for the interval. An interval is a break in the performance. The first half of the performance will be *Trouble in Tahiti*, the second half will be *A Quiet Place*. During the interval you can walk around, eat and take a break. At the end of the interval, the lights will be dimmed again for the second half. At the end of the performance all of the lights will come back on and people will begin to leave the theatre. It might be busy, so please take your time, there is no rush.

ROYAL BALLET AND OPERA

THE MUSIC

Trouble in Tahiti and A Quiet Place are both operas. The music will be performed by an orchestra in the orchestra pit and the singers on the stage. Some of the singers also appear above the stage.

During the performance the orchestra will be in the pit at the front of the stage. The percussion section sit on both sides of the stage. You can see them from some seats, but not from others. You do not need to see what they are doing, but you will hear them.



ROYAL BALLET AND OPERA

BEFORE THE PERFORMANCE STARTS

Grant Doyle, who plays the character of Sam in *A Quiet Place*, will come on stage. He will tell you about the performance and some of the scenes that you are about to see.



Remember, the story is not real and it is happening in a world that is not real. This is a story, and the performers are pretending to be other people.

ROYAL BALLET AND OPERA

THE MAIN CHARACTERS IN TROUBLE IN TAHITI AND A QUIET PLACE

Trouble in Tahiti and A Quiet Place are performed by several singers. They all perform as characters, in the background, in groups or on their own. These characters might change their costumes in different scenes but they are still acting as the same person.

Here are some of the main characters that you will see performing in the show. Sometimes a different performer will play the role if the original performer is ill or injured. You can check this on the cast sheet.

TOUBLE IN TAHITI



SAM is performed by Henry Neill

Sam is married to Dinah. He is hyper-masculine and can not communicate his emotions. He focusses on his career and struggles to talk to his wife.

This is what the character will look like in the show

ROYAL BALLET AND OPERA



DINAH is performed by Wallis Giunta
Dinah is married to Sam. She is frustrated, lonely and yearns for affection and connection from her husband. She drinks alcohol excessively.



YOUNG JUNIOR is performed by Jonah McGovern
Young Junior is the son of Sam and Dinah. He is quiet and sees his parents argue a lot.



The TRIO is performed by Peter Edge, Guy Elliott and Kirsty McLean
The trio narrate and comment on events throughout the story. They appear above the stage.

ROYAL BALLET AND OPERA

A QUIET PLACE



SAM is performed by Grant Doyle
This is the same Sam from *Trouble in Tahiti* but now he is older. Sam is grieving for his wife Dinah. He is emotionally unstable and feels alone. His children don't speak to him anymore.

This is what the character will look like in the show



DEDE is performed by Rowan Pierce
Dede is the daughter of Sam and Dinah and the sister of Junior. She is married to François. She is compassionate and thoughtful but damaged by a neglectful childhood.

ROYAL BALLET AND OPERA



JUNIOR is performed by Henry Neill
Junior is the son of Sam and Dinah and the brother of Dede. He was the lover of Dede's husband, François. He is mentally unstable, destructive and often has emotional breakdowns. He saw his parents fight a lot when he was younger.



FRANÇOIS is performed by Elgan Llŷr Thomas
François is married to Dede but was previously in a relationship with Junior. He is open-hearted, passionate, and tries to keep the peace amongst the other family members.

ROYAL BALLET AND OPERA

The Story

TROUBLE IN TAHITI

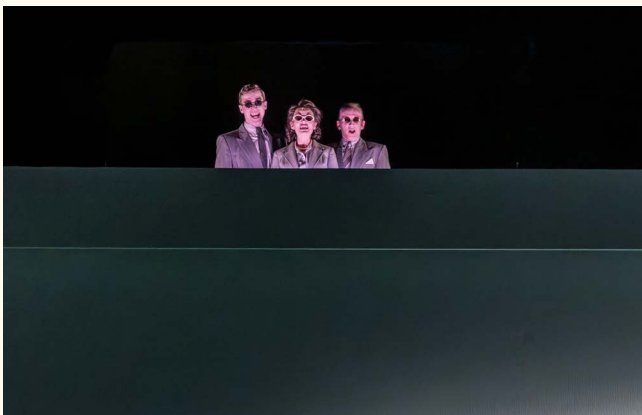
The lighting throughout *Trouble in Tahiti* is mostly low-level. The walls of the set are plain, so that big shadows and silhouettes can be seen throughout. There are other moments when the lights are bright and reflect intensely off the walls of the set.

The opera opens with a trio singing about the ideal family life in 1950s Suburbia, U.S.A. The singers appear above the stage.

In their house, the lead characters Sam and Dinah have an argument at breakfast. After ten years of marriage they wish they could be kind to each other, but they can't talk to each other anymore. Their child comes onto stage and watches them argue. The characters fight, throw objects and argue. This action is rehearsed and safe.

In his office, Sam completes a business deal and makes a loan. The trio of singers ironically sing about his business skills and big heart.

Dinah sings about a dream. In the dream she struggled to find her way out of a garden, a voice beckoned to her, promising that love would lead her to a quiet place.



ROYAL BALLET AND OPERA



The couple avoid each other at lunch, and talk about the beautiful garden where they met. The trio above the stage sings again about suburban life.



Rather than going to his son's school play, Sam goes to his own handball final and then practices boxing at the gym. During this scene he is topless. He sings about his own ability and desire to succeed. Sam watches someone in the shower, they are nude but you can only their shadow on the wall.



Dinah excitedly describes the musical *Trouble in Tahiti*, which she has just seen at the movies.



Sam and Dinah return home. The couple argue again before Sam tiredly suggests going to a movie – some new musical 'about Tahiti'. Dinah winces at the suggestion, then agrees, and they both depart.

This is the end of *Trouble in Tahiti*.

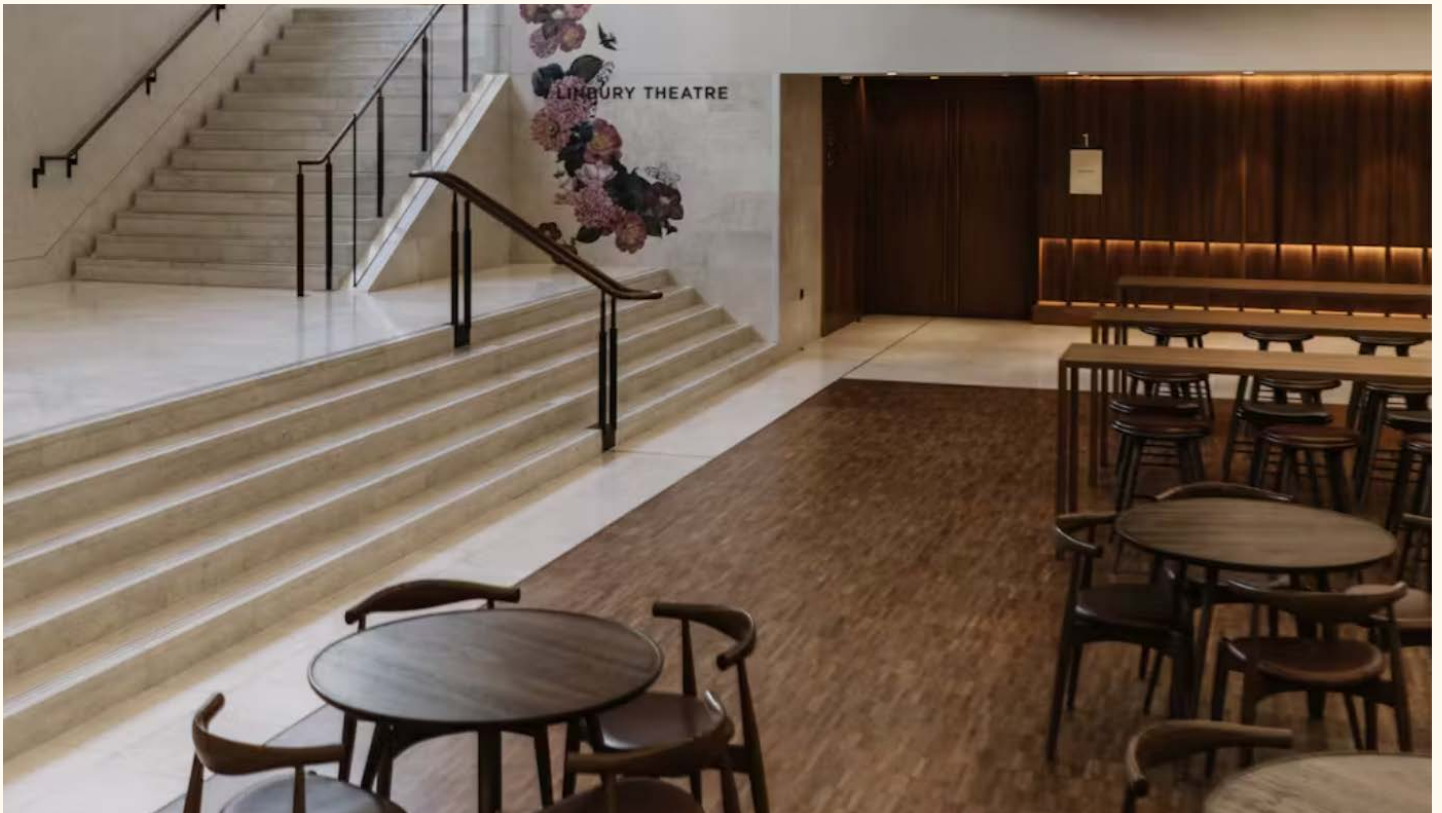
ROYAL BALLET AND OPERA

INTERVAL - 25 MINUTES

It is now the interval. You can leave your seats or stay where you are. You can leave the theatre and go into the foyer.

The backstage team will come onto stage to start moving furniture to make the set for *A Quiet Place*.

The interval is about 25 minutes. When the interval is over the lights will dim and *A Quiet Place* will begin.



ROYAL BALLET AND OPERA

The Story

A QUIET PLACE

PROLOGUE

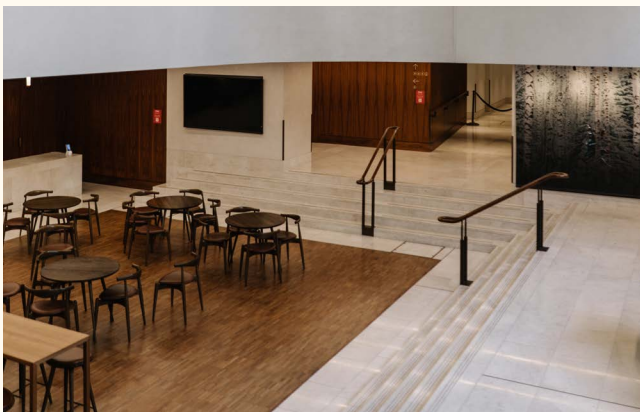
A Quiet Place begins with a very loud car crash sound effect. It builds slowly with a car engine rumbling. The rumbling then turns into a screeching sound. The sound finishes with a very loud crashing sound.

We have lowered the volume by 15 decibels to support this performance. However, it is still very loud and intense.

You may wish to watch from the TV in the foyer and ask the usher to seat you five minutes after the second half begins.

Following the car crash sound effect, the characters use torches and chatter loudly about the crash.

The torches have been choreographed to only shine on the stage, although some light may spill into the audience.



ROYAL BALLET AND OPERA



ACT I: THE FUNERAL HOME

Sam stands still and silent at the funeral of his wife, Dinah. Their friends and family move around the coffin uncomfortably. Their adult children, Junior and Dede, as well as Dede's husband (who is also Junior's lover), François, are late.

Sam does not speak to his children anymore: Junior, who is mentally ill, ran away to Quebec to avoid joining the Vietnam war, and Dede and François live with and care for him there.

After the service, Sam is angry with the three of them, and expresses his frustration, sadness and confusion. Sam knocks furniture over and pushes people. This is rehearsed and safe.

Junior loses self-control, taking off his clothes and accusing his father of killing his mother.

They fight over Dinah's coffin. The coffin lid falls to the floor. Sam storms out, followed by Dede and François. Junior, alone, looks over the wreckage of the funeral. The fire in the background is not real, it is created using red and orange lights.

ACT II: THE FAMILY HOME

Later that night, Sam reads Dinah's old diaries where she writes about how unhappy she is with her marriage and how angry she is at Sam. He discovers a letter from Dinah but cannot bring himself to read it.



ROYAL BALLET AND OPERA



Dede enters and together they go through Dinah's closet. Dede tries on Dinah's dress and Sam is stunned at the resemblance between them.



François confronts Junior about his behaviour at the funeral. Junior has a psychotic episode and imagines painful fantasies, first of his father shooting him as a child, then of a sexual relationship with his sister Dede. These are hallucinations and are not memories of what really happened.



François finally gets Junior to sleep, and he and Dede meet outside, François tells Dede how much she means to him.

Sam goes into Junior's room but is not able to kiss his sleeping son goodnight. He returns to his room and reads Dinah's letter.

ACT III: THE GARDEN



The next morning Dede weeds her mother's garden. She and Junior play games from their childhood. François and Sam join. At the peak of their game, François runs into Sam's arms – Sam embraces him and welcomes him to the family.

ROYAL BALLET AND OPERA



He asks François to take Dinah's letter and read it out loud. It is a suicide note – Dinah asks her family to 'Accept, and live.' Sam tells the family that there were Christmas cookies with the letter. Dede tries to hide an awkward laugh, before the tension breaks and they roar with laughter. Haze is used to create a smoke effect. This is rehearsed and controlled by technicians.

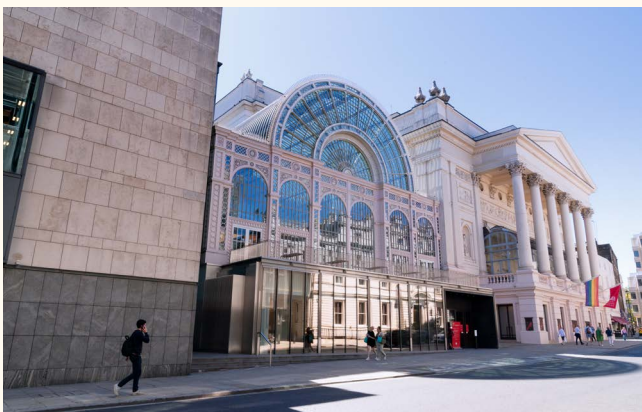


Dede suggests they stay on with Sam for a few days more, but a discussion over who will sleep in which room becomes another fight.



Francois shout out at the family for their inability to escape their past and tears up Dinah's letter. Dede, Junior and Sam collect the scraps scattered on the ground.

Junior tells Sam that 'it hurts so much to mean so much to you' and Sam finally embraces his son. François in turn reaches out to Dede, who, mustering all her courage, takes his hand. Sam and Dede reach out tentatively to one another.



That is the end of *A Quiet Place* and the performance.

People will leave the theatre. It might be busy, so please take your time, there is no rush.

ROYAL BALLET AND OPERA

SENSORY HIGHLIGHTS

TROUBLE IN TAHITI

The information below aims to highlight moments of sound, lighting and action that maybe surprising.

Sound:

– The music varies througout Trouble in Tahiti, reflecting both good and tense moments.

Lighting:

– The lighting throughout Trouble in Tahiti is mostly dark and gloomy. The walls of the set are plain, so that big shadows and silhouettes can be seen throughout.

– There are other moments when the lights are bright and reflect intensely off the walls of the set.

– There are total blackouts where the stage goes completely dark. The houselights will always remain on in the auditorium.

Action:

– A topless man boxes on stage.

– A nude man showering. You can only his shadow on the wall.

– A child appears and watches his parents argue.

– The charachters drink alcohol excessively througout the performance. The bottle is a prop and is empty.

– The characters argue, throw props at each other and push each other.

– The characters display intense emotions througout. They laugh, cry and shout.

All of the action is rehearsed, no one is actually hurt or upset.

ROYAL BALLET AND OPERA

SENSORY HIGHLIGHTS

A QUIET PLACE

The information below aims to highlight moments of sound, lighting and action that maybe surprising.

Sound:

– A Quiet Place begins with a very loud car crash sound effect. It builds slowly with a car engine rumbling. The rumbling then turns into a screeching sound. The sound finishes with a very loud crashing sound.

We have lowered the volume by 15 decibels to support this performance. However, it may be too loud or intense for some audience. You may wish to watch from the TV in the foyer and ask the usher to seat you 5 minutes after the second half begins.

– The music throughout A Quiet Place is bleak and jagged. It feels harsh, tense and is loud.

Lighting:

– Following the car crash sound effect, the characters use torches and chatter loudly. The torches have been choreographed to only shine on the stage, although some light may spill into the audience.

– Red and orange lights are used to create a fire effect. The fire isn't real.

Smoke:

– Towards the end of A Quiet Place, haze is used to create a smoke effect. This is rehearsed and controlled by Royal Ballet and Opera technicians.

– Characters also smoke fake cigarettes on stage. They are not harmful.

Action:

– The characters occasionally fight, they push and pull each other.

– The characters display intense emotions throughout. They laugh, cry and shout.

– The characters drink alcohol excessively throughout the performance. The bottle is a prop and is empty.

ROYAL BALLET AND OPERA

HELP US IMPROVE OUR VISUAL STORIES AND ACCESSIBLE EXPERIENCE

Please scan the QR code below and complete a brief survey regarding our Visual Stories and Relaxed Performances. Your feedback is important to us and will be used to enhance our accessible features for future performances. We thank you for your time.

